

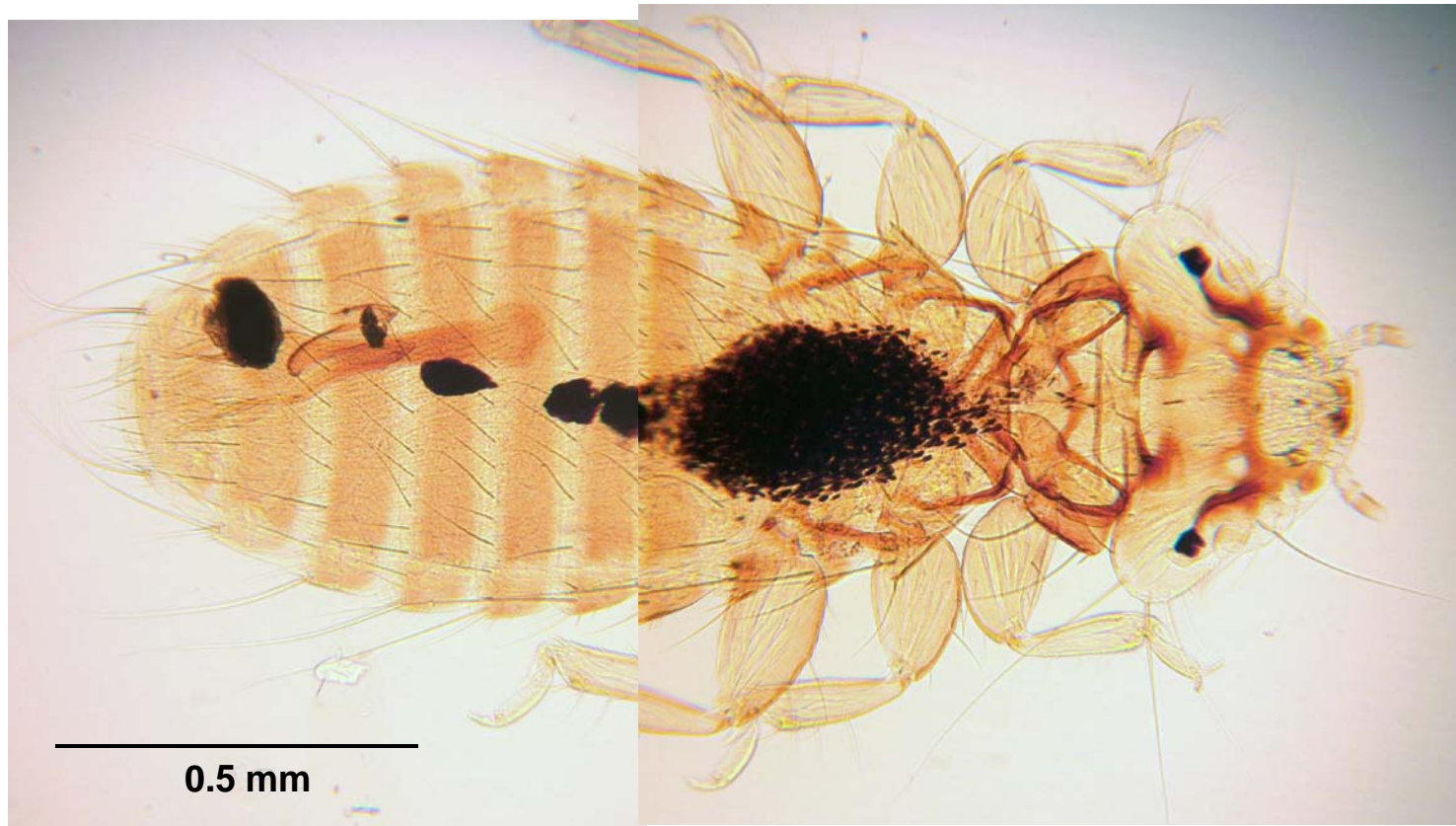
Menacanthus stramineus
female, entire (e, egg). Bifid claw
of first leg (insert).



Menacanthus stramineus, head. Legend: a, antenna; md, mandibles; mp, maxillary palp; pt, prothorax.



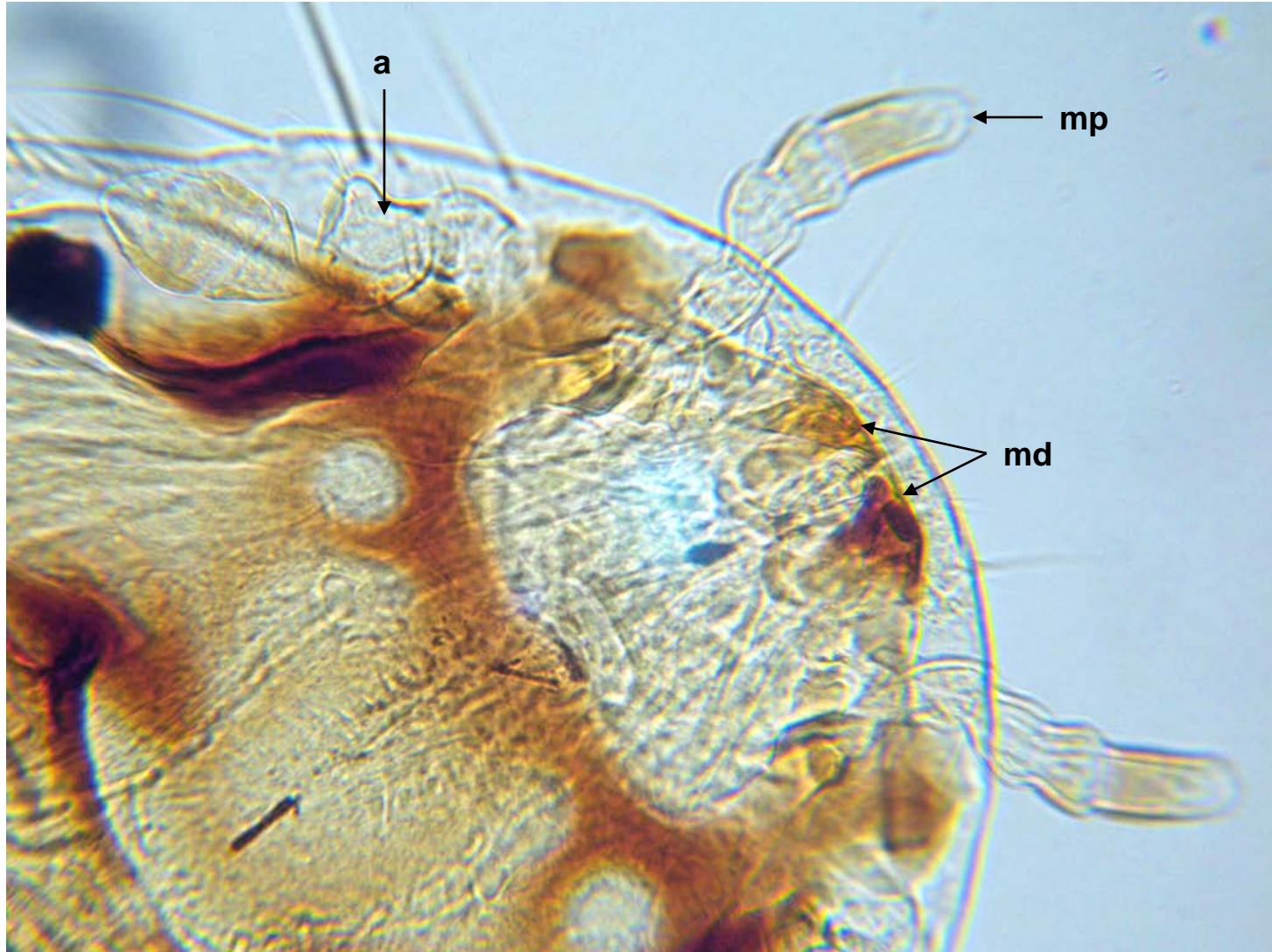
Menacanthus stramineus male.



Menacanthus stramineus, male, genitalia.



Menacanthus stramineus, male, anterior. Legend: a, antenna; md, mandibles; mp, maxillary palp.



Menacanthus stramineus nymph; entire
(A), mouthparts (B).

Legend: a, antenna (distal segment);
md, mandibles;
mp, maxillary palp.

